

usb flash drives - card range



slim, card-sized units make a statement

F full colour printing on both sides

701

plastic
flip-out port
lanyard optional

F**702**

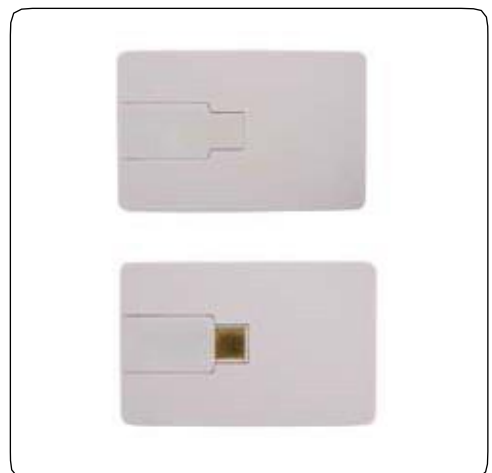
plastic
small swivel port

F**703**

plastic
rubberised, double-sided port

F**704**

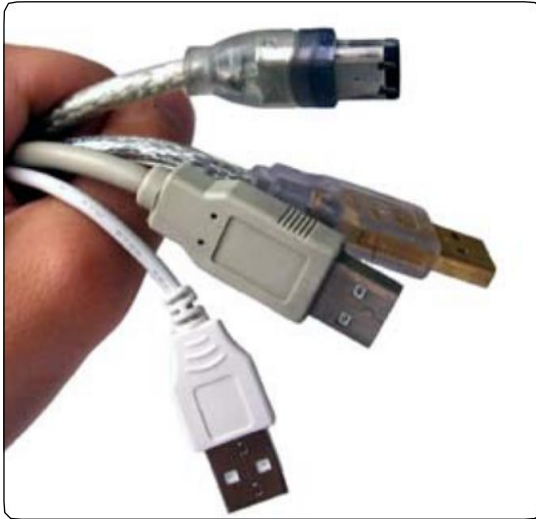
plastic
large swivel port

F**710**

metal
plastic pull-out port

P L

usb flash drives - special designs



unique models

industry-specific designs

objects and people

826

metal with rubberised comfort grip
with laser pointer
all major colours

P **L****829**

plastic/rubberised
with compass
all major colours

P**879**

metal with black plastic cap
rugged carabiner clip

P **L****878 multi-tool**

metal/plastic
multi-tool
all major colours

P**801 gold bar**

metal

L**802 platinum bar**

metal

L

805
metal
angled shape

P L



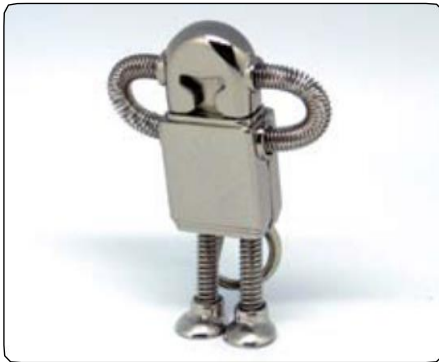
806
metal
square shape

P L



812 robot
metal
silver

P L



813
metal
gold/silver

P L



815 people
plastic
all major styles and colours
customised designs available

P



821
plastic
black with blue or green light-up logo



831metal
bottle opener**P** **L****832 wine bottle**metal
all major colours**P** **L** **C****833 cork**

plastic

P**840 chilli**plastic
all major colours**P** **C****845**plastic
all major colours**P****819 soccer ball**plastic
white and black/green/blue/red**P**

845

plastic - rubberised finish
all major colours

P C



846

plastic - rubberised finish
black with red and white

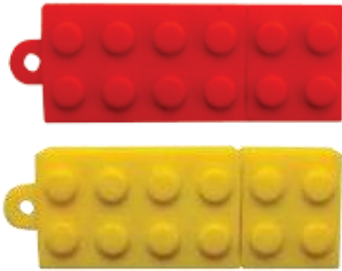
P



847

plastic - rubberised finish
all major colours

P C



848

plastic
black

P



849

plastic
metallic red

P



834

plastic/fabric
all major colours
brand on lanyard and clip

P C



please enquire for additional models

usb flash drives - custom



make your brand stand out with a unique design

how to create your own USB flash drive



1. defining objectives

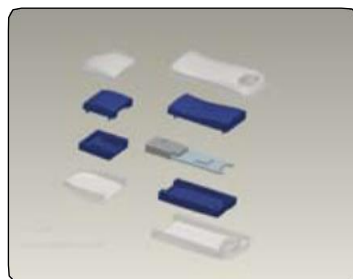
clear goals and measurements for ROI are significant in a project of this magnitude and it is important that all parties involved in the process have full understanding of these

2. product conceptualisation

an idea is conceptualised based on the brand image, logo, icons, or specific product, as well as on artwork and input from the brand owner

3. 2D design rendering

an industrial designer from our factory creates a 2D rendering of the concept, which is tweaked until the design is finalised and approved



4. sample creation

a physical sample of the final design is made by hand and for final changes and approval

5. mould development

a manufacturing mould is created from the 2D design and physical sample

6. production

units are manufactured and delivered within one month for plastic and metal models
rubberised PVC units are delivered within two weeks

The product is protected through CE certification and mould rights, thus ensuring that the design remains exclusive to the brand and does not get copied.

turn your flash drive into a powerful communication tool



pre-loading data transforms a simple memory stick into a business and communication tool

a flash drive provides the means to convey your message in an accessible, interactive format

when combined with branding on the unit, it creates impact and increases return on investment

three types of duplication are available:

embedding

- the data is loaded permanently and cannot be formatted or deleted by the recipient
- this is achieved by partitioning the drive into two sections, one of which is available for normal use

auto-play

- the data is configured to run automatically when the unit is plugged in
- this also requires partitioning of the drive and the recipient cannot delete the data
- please note that some operating systems do not allow this feature and some users may disable auto-run/auto-play on their systems

standard load

- data is copied and pasted onto the drive and can be deleted by the recipient

additional information

- the drive can be renamed to show the company/brand name when plugged in
- for maximum return on investment, we recommend that a minimum of 50% of the drive capacity be left free for recipient use
- digital photo frames can also be pre-loaded with relevant images, as well as with the company name or logo on the boot-up screen

clear plastic gift box

fits most standard flash drives

**compact tin**

fits most standard flash drives

**square tin**

fits most standard flash drives

**round tin**

fits standard, wood and wristband drives

**black gift box**

fits most standard flash drives

**wood pillbox**

fits most wood and bamboo flash drives



pen tin

fits all pen models



pen box

fits all pen models



card box

fits all card-shaped drives



accessories

- black shoelace lanyard
- black or white wrist-strap
- beaded metal lanyard
- keyring attachment
- customised lanyards available on request

brand your packaging for extra impact

plastic boxes

- printing
- decals
- dome stickers

cardboard boxes

- printing
- foiling
- decals
- wrap-around (full-colour print)

tins

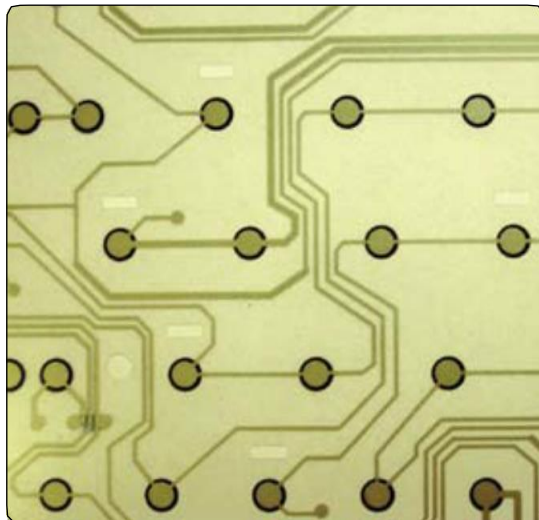
- printing
- laser engraving
- decals on windows
- dome stickers

custom boxes

cardboard boxes can be tailor-made in any colour and with full-colour print
minimum order quantity 100

other ideas? special requests? please enquire

mice and keyboards



corded and wireless mice

flexible keyboards

combo sets

I 101retractable corded mouse
all major colours**P****I 102**corded mouse
all major colours**P****I 201**wireless mouse
all major colours**P****R****I 202**wireless mouse
all major colours**P****I 203**wireless mouse
all major colours**P****I 204**wireless mouse
all major colours**P**

1501

metal tin for mice
branding and customised foam inserts optional

P **L**



2101

small flexible keyboard (88 keys)
all major colours

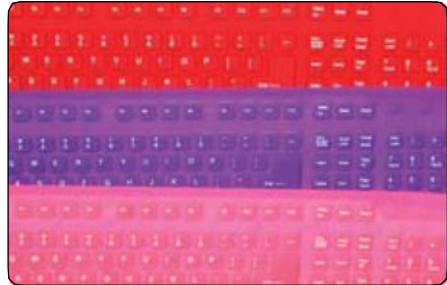
P



2102

large flexible keyboard (106 keys)
all major colours

P



3101

combo sets
packaged in clear plastic cylinder

P

choose from small or large keyboard and add:

- corded mouse
- wireless mouse
- flash drive
- mouse and flash drive



digital photo frames



1.5"

2.4"

7-10"

3101

1.5" square keyring frame
all major colours



dimensions: 6 x 4.5 x 1cm
128 x 128 resolution
user-friendly mini-USB interface
plug-and-play on most operating systems
16MB built-in memory
manual or auto photo display
auto slideshow, auto off
calendar and clock display
built-in lithium battery with long stand-by time
accessories: USB cable, instruction manual
packaging: white box

3102

1.5" oval keyring frame
all major colours



dimensions: 7.7 x 4.4 x 0.95cm
128 x 128 resolution
user-friendly mini-USB interface
plug-and-play on most operating systems
16MB built-in memory
manual or auto photo display
auto slideshow, auto off
calendar and clock display
built-in lithium battery with long stand-by time
accessories: USB cable, instruction manual
packaging: white box

3105

1.5" frame with pen holder
all major colours



dimensions: 14.5 x 8.3 x 8cm
128 x 128 resolution
user-friendly mini-USB interface
plug-and-play on most operating systems
16MB built-in memory
manual or auto photo display
auto slideshow, auto off
calendar and clock display
time bar and current temperature
pre-loaded background music
built-in lithium battery with long stand-by time
accessories: USB cable, instruction manual
packaging: white box

3107

2.4" curved frame
all major colours



dimensions: 7.7 x 7.7 x 4.7cm
320 x 240 resolution
user-friendly mini-USB interface
plug-and-play on most operating systems
16MB built-in memory (20-30 pictures)
manual or auto photo display
image formats: jpeg, bmp
auto slideshow, auto off
calendar and alarm clock function
built-in lithium battery or USB power supply
accessories: USB cable, instruction manual
packaging: white box

3106

2.4" standing frame
all major colours



dimensions: 9.9 x 7.1 x 1.5cm
320 x 240 resolution
user-friendly mini-USB interface
plug-and-play on most operating systems
16MB built-in memory (approx. 40 pictures)
manual or auto photo display
image formats: jpeg, bmp
auto slideshow, auto off
calendar and alarm clock function
built-in lithium battery or USB power supply
accessories: USB cable, instruction manual
packaging: white box



3107

2.4" frame with holder
all major colours



dimensions: 13 x 11.8 x 7.3cm
320 x 240 resolution
user-friendly mini-USB interface
plug-and-play on most operating systems
16MB built-in memory (approx. 25 pictures)
manual or auto photo display
image formats: jpeg, bmp
auto slideshow, auto off
calendar and alarm clock function
requires 3AAA batteries (not included)
accessories: USB cable, instruction manual
packaging: white box

3112

7" frame with white stand
all major colours



dimensions: 20*14.5*8.5 CM
480 x 234 resolution
user-friendly with full-function remote control
16MB built-in memory, extra memory optional
supports SD, MMC, MS cards and USB
image formats: jpeg, bmp
music formats: mp3, wma
video formats: mpeg1, mpeg2, avi
calendar and alarm clock function
auto power on/off
external power supply: 12V/1.5A
accessories: remote control, instruction manual
packaging: white box
custom packaging available with large quantities

product information

manufacturing standards

all products are manufactured to CE and ISO-9001 standards and are made for durability and frequent use

products are manufactured in factories that adhere to strict health and safety (including ROHS) and labour standards

warranty

any technology has an inherent failure rate, thus all products carry a one-year swap-out warranty

any faulty unit that cannot be repaired will be replaced promptly